



Summer 2021

Plant your postcode News

Before sharing our news, we need your help - please become a member of CPRE Sussex. We are a small charity with shrinking reserves and cannot continue our tree planting projects or vital campaign work without more members. We ask you to join us now, for less than the price of a cup of coffee at £3/month! Go to: www.cpresussex.org.uk/get-involved/become-a-member This is an urgent appeal for your support – we need more members to carry on.

Thank you for supporting the City's Trees!

Despite everything that Covid 19 and the weather has thrown at us we've managed to keep planning and planting in and around the City over the past 18 months.

The following are just some of the projects we've been working on with local resident's groups. Funds generously provided by the Rampion Community Fund and the National Lottery, now spent, have enabled us to achieve a great deal.

We know that greening up the city with healthy green spaces by planting trees benefits everyone, but escalating costs quoted for new planting is proving to be THE major barrier to community involvement in planting street trees. Over fifty groups and individuals have contacted us hoping to plant or replace trees in their streets. We are calling for reasonable costs that are possible for communities to raise to help the council get street trees planted. We are also working with the council to bid for more funding for city trees - we will keep you updated!

The City Council Arboriculture department now has three new members of staff, already super busy, but anxious to see trees planted who have been very supportive in helping to get projects off the ground. This is great news!

Completed Projects Sylvan Hall - Community Orchard

We helped plant a group of fruit trees, plum, greengage, apple and pear, to create a small orchard with a native hedge surrounding the area in February of this year.

West Hove School

We advised the school's parent teacher's group on planting and contributed funding towards an evergreen hedge to reduce traffic pollution from Portland Road in the school playground. The hedge was planted in November 2020.



Greg Sweeney and Michael Roberts – David Archer Associates: Arboriculture consultants at work in Sylvan Hall Community Orchard



Evergreen hedge at West Hove School

Wellsbourne Community Garden, Whitehawk

We worked with the Permaculture Trust on plant selection and plans for the Community Garden and the Healthcare Centre team and volunteers have already begun planting up the orchard with a lovely wide range of fruit and nut trees together with some beautiful ornamental cherries. The planting of the planned 15 major trees and 40 fruit and nut trees should be completed in the next planting season which runs between October 2021 and March 2022.



Planting plan



Volunteers planting at Wellsbourne

Preston Manor

Preston Manor gardening volunteers will be planting three new trees, a medlar, an amalanancier and a witchhazel, in the Manor's Edwardian Walled Garden to replace those lost. The trees are now being stored for planting in the autumn.



Witch hazel tree



Amalanchier in flower

Bristol Estate, East Brighton

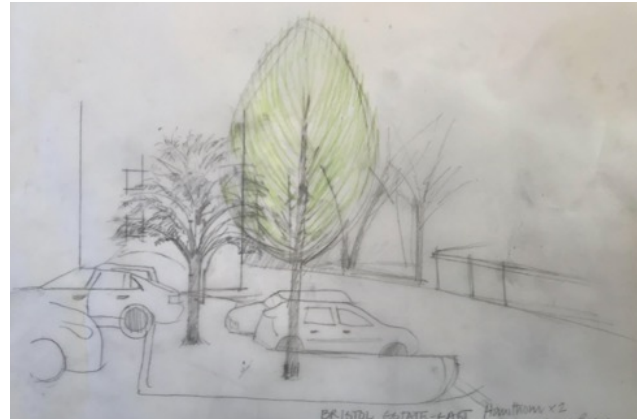
Bristol Estate's ambitious nature loving residents are working to 'green up' the estate and we are helping them to achieve this. The initial stage of the plan we've developed is to plant 20 major street and amenity trees with a mix of tree species, including, pines, hornbeam, lime, flowering pear, disease resistant elm, and wild service trees, to diversify the City's urban forest. This initial planting will be in two phases starting in the autumn. We hope to plant the first tree at the Estate's 'Nature Day' in October.



Artists impression of the proposed tree planting at the end of Bowring Way



The view north looking towards Community Centre along Chadborn Close Close



Bowring Way - parking area

Bulstrode Farm, Ovingdean

Last year a local farmer asked for help to increase biodiversity and tree cover on their council owned farm on the city fringe. A plan for a copse which includes approximately 17 native forest trees and 32 understory trees, which will also mask the industrial agricultural buildings, was approved. The South Downs National Park will be supporting the project for planting during the coming planting season.



Plan



Site



Elevation



Urban Street Tree Planting

The work we've been doing has, of necessity, been in green, uncontested areas in the city. Planting in the urban area and the city centre itself remains problematic for a whole variety of reasons, although we're happy to report that Hove Civic Society and the residents group of Glebe Villas in Hove have seen their street surveyed and there is space for around 18 street trees. Residents have spent three years fundraising and find the goal posts in terms of costs have moved. The call is for the council to revisit its new proposed costs so the street can get as many trees planted as possible next season.

The Brighton & Hove Tree Strategy

This has been on the council website since 2019 but has still not been put out for public consultation. This means residents have as yet had no say on the strategy which currently appears to leave the streets that are hard landscaped alone and to plant, if possible, in wide pavements, soft verges and green spaces mainly outside the city centre, which if it continues will create a green doughnut! The town centre and older, once heavily planted areas denuded and our Victorian heritage of leafy streets gone.

We will be speaking up for the Urban Forest and street trees in the city centre particularly, when the time comes and hope you will all support us.

Become an active volunteer!

We need help - writers, social media folk, fundraising and administrative support, tree champions, wardens etc. etc. Interested? Please contact info@cpresussex.org.uk

One new home, one tree planted

We are supporting Hove Civic Society's initiative to require developer contributions for street tree planting, and will be asking developers to pay for for one newly planted tree for every new dwelling that is erected through the new City Plan.

Planting trees in large numbers will help the Council achieve it's carbon neutral targets, reduce pollution and help deal with heat island effects, provide shade, create ecological diversity, support wildlife and provide us with the visual pleasure of greenery in the city increasing health and wellbeing.

We are all aware that trees make our streets far more pleasant to live in and more agreeable for walking and all forms of active travel and this initiative, if acted on, will go a long way towards rejuvenating our urban forest for everyone's benefit.

Fundraising

We are in the process of submitting a bid with Trees for Cities called 'Forgotten Places' for money to plant in areas of deprivation and low tree cover across Brighton and Hove through the governments Urban Tree Challenge Fund. Keep your fingers crossed!

Contact us

plantyourpostcode.org/contact

Become a member of CPRE Sussex:
the countryside charity

[www.cpresussex.org.uk/get-involved/
become-a-member](http://www.cpresussex.org.uk/get-involved/become-a-member)

Make a donation

www.cpresussex.org.uk/make-a-donation