

Why I am Interested in this project?

"People from a planet without flowers would think we must be mad with joy the whole time to have such things about us." Iris Murdoch

This project would be a dream come true for me. Since childhood I have had passion for plants of all kinds, both wild flowers and garden plants. I studied biology at university and became fascinated by wildlife of chalk downland. I am now a garden designer and I also run Hearts and Flowers Brighton, a CIC in Stanmer Park which grows flowers for cutting and also runs well-being workshops for community groups and I have seen there how a connection to the natural world can improve peoples moods.

The Bristol Estate is built on a beautiful coastal downland but it does not have the many of plants that you would expect to see in such an environment. This project presents an opportunity to establish more wild flowers, and to provide homes for birds, bees, butterflies and moth and other insects. The results will not be instant but this scheme could be a step forward to building a haven for the people of the estate and for wildlife too.

If I were to talk to the people of the estate I would say under this scheme eventually there will be -

- some better views for you, with hospital, bins, garages obscured or broken up with something nicer to look at
- some more shelter from the wind once the shrubs have had a chance to grow
- a chance to watch things grow and to see how they develop – maybe you might want to get involved and volunteer to plant some things and to grow some of the plants in our giveaway?
- something of interest and beauty to look at year round – delicate spring bulbs, summer wild flowers, tinted autumn leaves, coloured berries and twigs in winter
- an increase the wildlife that you can see on the estate birds, bees and butterflies

If I could to talk to wildlife about this planting I would say:-

- Bees – We are going to plant many different flowers that you like to provide you all with food at all times of the year
- Butterflies and moths – We are going to plant some great food plants for your caterpillars, and lots of flowers in that you like to feed on
- Birds – Soon here will be thick shrubs here for you to shelter in and many different berries and seeds to eat. For those of you like robins that eat insects, you can expect more food on the Bristol Estate due to the variety of UK native plants that will be growing there.



Outline Garden Design Bristol Estate

SITE 1

Entrance Planting For a welcome at south west entrance to the estate, there will be a planting of **spring flowers** in the grass, which will provide sweet nectar for early bees, Desire paths were people have chosen to walk across the grass will be left unplanted.

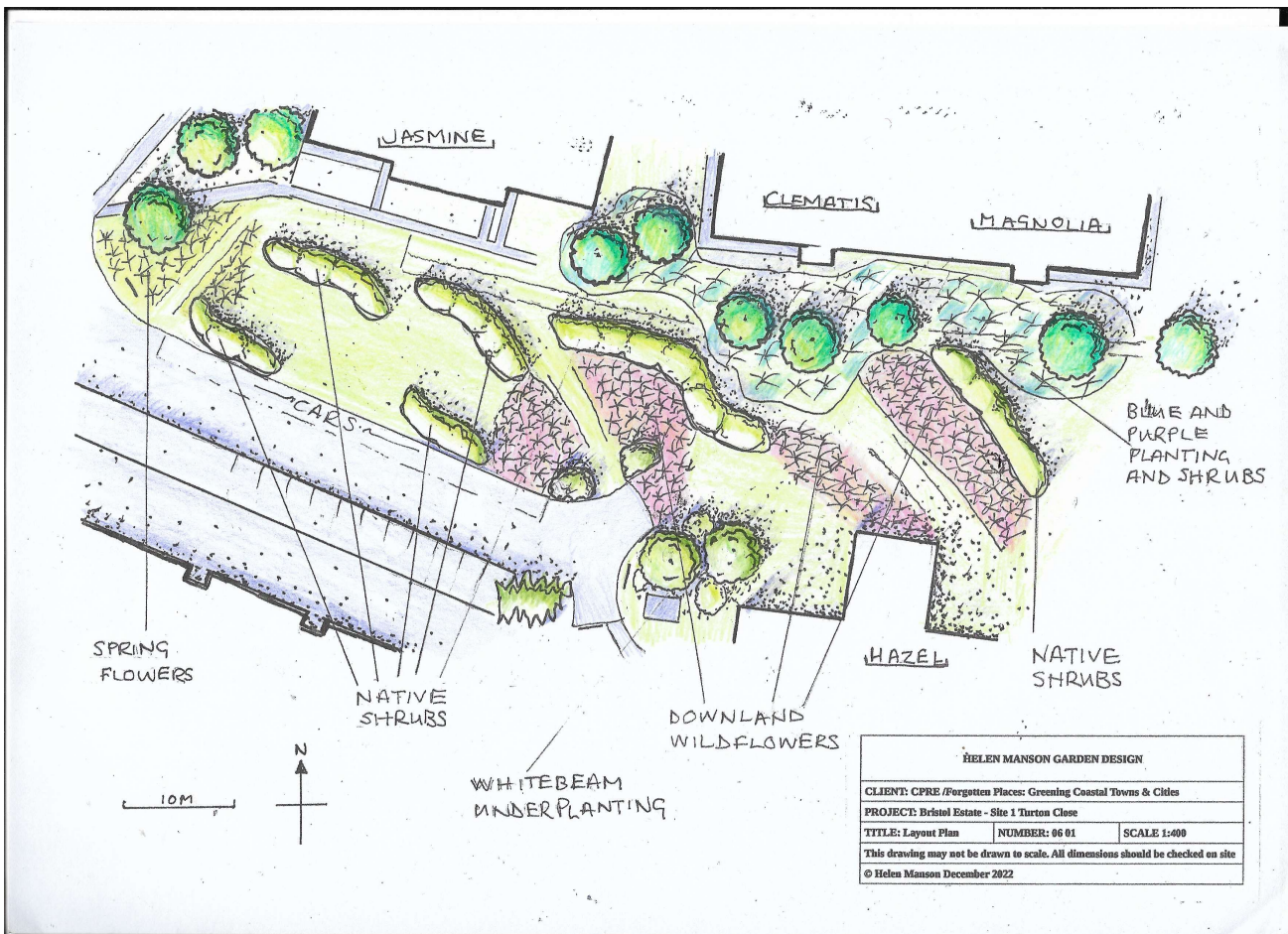
Behind Jasmine and along Turton Close Banks of **native shrubs** will be planted on the crest of the hill to protect people from the wind in the flat area at the back of JASMINE and to hide the garages from view from ground level and break up the view of the hospital to those on the lower floors. More of these shrubs alongside Turton Close to will eventually cut the view of the garages from the upper floors of JASMINE

Grassland **Downland wild flowers** will be planted in the grass slope either side of the desire paths:- the first across the grass down to the footpath that leads from the end of Turton Close, and the second from behind CLEMATIS and MAGNOLIA to between HAZEL and SAFFRON.

Between the New Pines Shrubs will be establish to help protect the newly planted trees - Rosa Rugosa with scented pink flowers, yellow autumn leaves and large red rose hips in autumn together with architectural Euphorbia charias with structured, grey green leaves year round and yellow flowers in early spring, **blue and purple wild flowers and garden plants** to be established in the grass in large clumps /drifts. More detailed design to be undertaken when exact siting of the new pines on the ground is known (Flat space behind CLEMATIS and MAGNOLIA to be preserved)

Whitebeam Underplanting Rosa rugosa, and **spring flowers**

Site 1 Layout

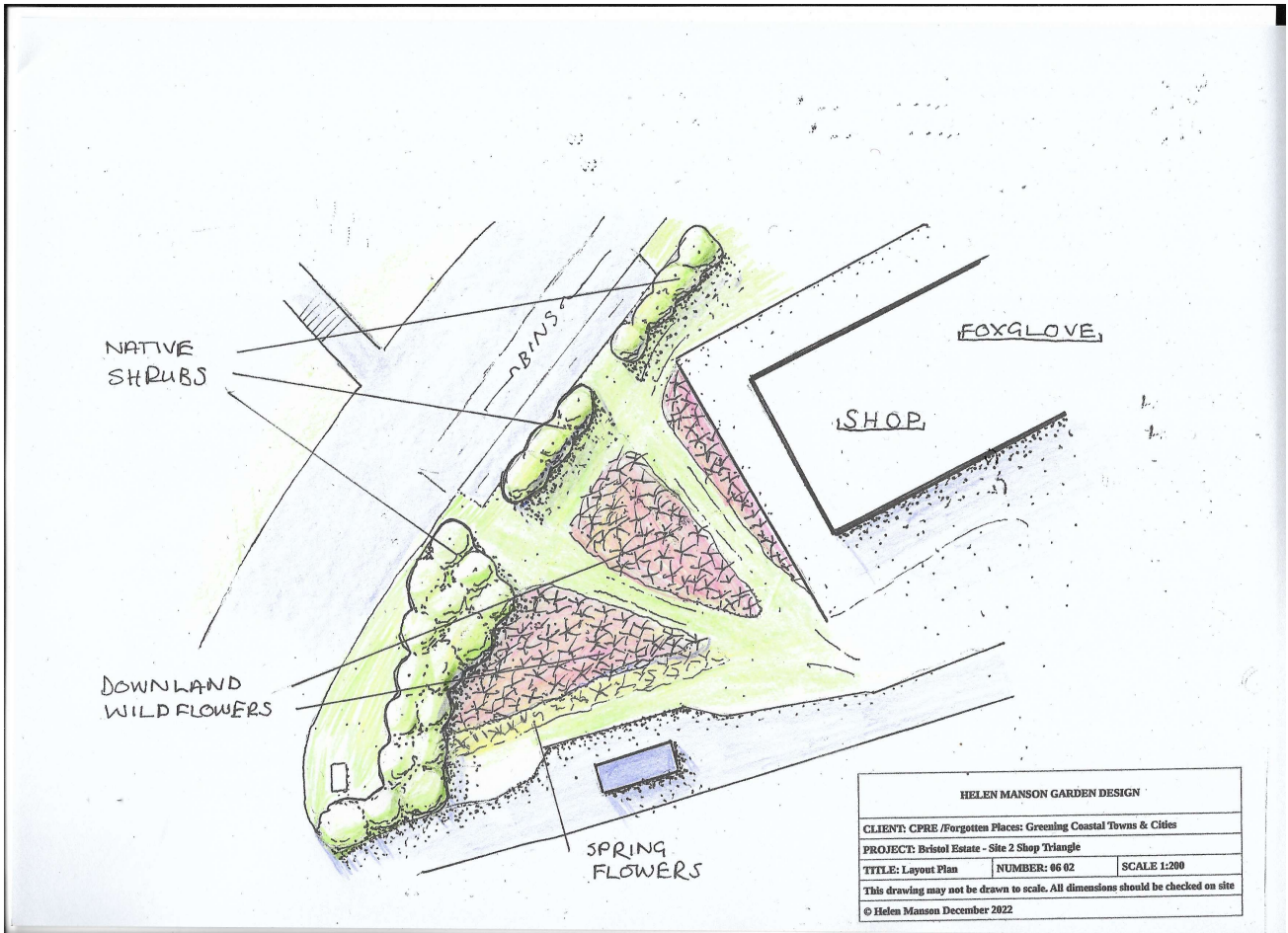


Outline Garden Design Bristol Estate

SITE 2

Shop Triangle **Native shrubs**/Pink flowered Rosa Rugosa will be used to screen the bins so that they cannot be seen from the south from ALLAMANDA. To the west a group of **native shrubs** will provide cover and food for birds and protect the grass and kerb where drivers like to cut the corner. The central triangle in the grass which has some established wild flowers will be planted with plugs of further **downland wild flowers**. Desire paths where people have chosen to walk across the grass will be left unplanted. Below the wild flowers behind the bus stop will be a planting of **spring flowers** - leaving with plenty of room for those waiting for the bus to sit on the wall!

Site 2 Layout



Outline Garden Design Bristol Estate

SITE3

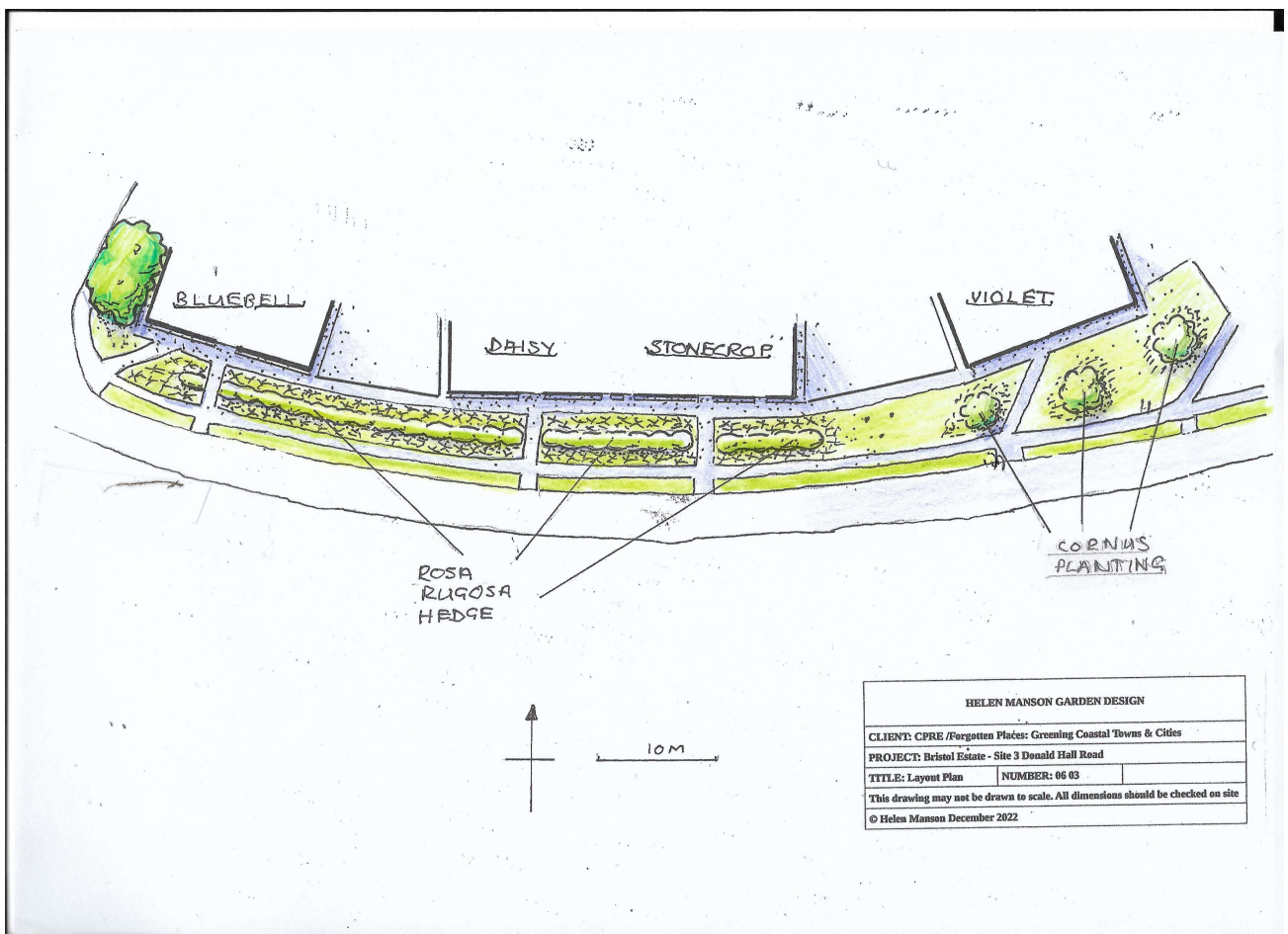
Rosa Rugosa Hedge A long hedge of Rosa Rugosa will be planted on the grass bank to the south of the pathway adjacent to BLUEBELL, DAISY, and STONECROP, as it grows it will cut the wind improving the walking conditions there. This tough rose has white scented flowers in summer, yellow leaves and large red rose hips in Autumn. **Spring flowers** will be planted either side of the hedge.

Cornus Planting In front of VIOLET will be planted three clusters of three different kinds of Cornus bushes, These will have a white flowers in the spring, a mix of green and pale edged leaves in the summer, yellow and red leaves, white and black berries in autumn. Once their leaves have dropped the twigs of the Cornus of will show yellow, purple and red in the winter sun. The Cornus will be underplanted with **Spring flowers**.

(These clusters could be each planted with central tree at a later date)



Site 3 Layout



THE PLANTS

Spring Flowers



Bee favourites- Snowdrops, wild daffodils, cowslips, primroses, coltsfoot, dwarf comfrey, sweet violets

Native Shrubs



Dogwood - Dark red leaves in the autumn and bright red stems to cheer in the winter months

Blackthorn - White Blossom in March and black fruit in autumn to make Sloe gin for Christmas!

Hawthorn - White blossom in May to lift our spirits. Dark red berries for birds in the Winter

Dog Rose, Sweet Briar, Burnet Rose, are delicate scented wild roses for people to enjoy in high summer, with red rosehips for the birds in the winter.

Wayfaring Tree- This bush like to grow next to paths. Food for the amazing orange tipped clearwing moth
Guelder Rose – Beautiful lacy white blossom in June. Its shining red berries in August are a favourite food of bullfinches

Spindle – Pink purple leaves in autumn and neon pink and orange berries in winter

Alder buckthorn – Black berries for thrushes in the autumn and its leaves are food for the caterpillar of the bright yellow brimstone butterfly

Gorse - Coconut-perfumed, yellow flowers during the spring and summer, great cover for warblers, stonechats and yellowhammers

Wild privet – Keeps it leaves in winter providing shelter for birds. It's the food plant of the spectacular privet hawk moths' caterpillar

Sea Buckthorn – Grey leaves all year and bright orange berries in autumn food for blackbirds, thrushes, starlings and migrating birds



Downland Wild Flowers

A buffet for butterflies



Yarrow

Agrimony

Kidney Vetch

Betony

Black Knapweed

Greater Knapweed

Chicory

Wild Basil

Wild Carrot

Dropwort

Wild Strawberry

Field Bedstraw

Ladies Bedstraw

Horseshoe Vetch

Field Scabious

Ox Eye Daisy

Birds Foot Trefoil

Wild Thyme

Red Clover



Blue and Purple Wild Flowers and Garden Plants



Wild flowers: Columbine or Aquilegia (May- Jun), Clustered Bellflower (June -Aug), Meadow Cranesbill (Jul - Aug), Jacobs Ladder(Jun-Jul), Meadow Sage (May - July) and Field Scabious(Jun - Oct)
 Garden Plants: Siberian Iris (May- June), Globe Thistle (July- Sept) Anise Hyssop (July – Oct)

Giveaway



We hope to be giving away seeds and plants to residents who help in the planting. These flowers would add colour to private or public spaces on the estate. If some spread or self seed around then it could add unity to the overall look of the estate.

- | | |
|--------------------------|--|
| Thrift plants | Short pink flowered perennial. Likes the wind! Perennial |
| Marigold seeds | Familiar jolly orange flowered annual. Should self seed |
| English Stonecrop plants | Small succulent. For outside STONECROP? |
| Honeywort seed | Blue and turquoise flowered annual. May self seed. Needs some shelter |
| Larkspur seed | Spires of blue flowers annual. May self seed. Plant in some shelter |
| Mexican Fleabane plants | Tiny white pink daisy. Likes the wind! Plant by a path. Perennial |
| Dwarf sunflower seed | For a late splash of yellow. Sow in April |
| Cornflower seed | Bright blue annual. May self seed |
| Nasturtium seed | Great to make a bright orange flowers in the late summer and autumn. May self seed |
| Sea Campion plants | Charming little puffs of white flowers that shake in the wind. Perennial |