

# HAPPY GARDENS DESIGN



**A proposal for greening up the Bristol Estate**  
**December 2022**

## **Table of Contents:**

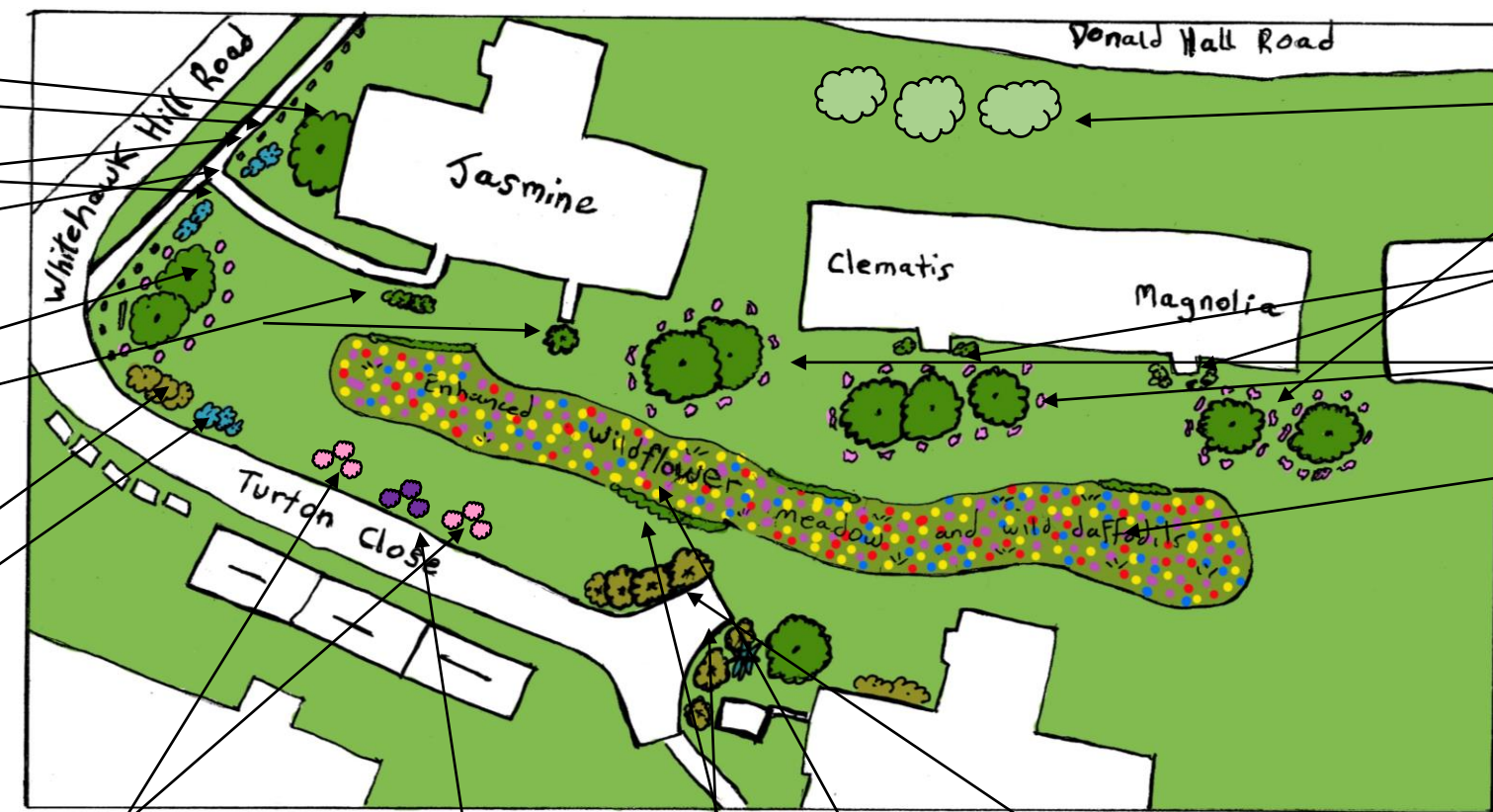
1. Response to the Brief
2. Planting plan layout site 1 and design rationale
3. Planting plan layout site 2 and design rationale
4. Planting plan layout site 3 and design rationale
5. Design Visualisations
6. Visual plant lists
7. Draft Plant List, Quantities & Budget
8. Planting schedule and logistics
9. Meet the team

# Response to the Brief

My name is John McPherson and I'm from Happy Gardens Design. I first moved to the UK in 1994 and spent 10 years living on the Meridian Estate in Greenwich. When it was re-furbished in 1999, while it certainly made the estate greener, residents weren't consulted in the plans. I am interested in building a practice in designing civic spaces that include the views of residents and local people – after all, they are the ones who use these spaces. For this reason, I am very interested in this project. For the Bristol Estate, my design partner Liz McCullough and I wanted to respond to the CPRE Sussex brief to ensure that our design was not only in line with the brief's requirements but tried to envisage what we would want to come home to if we lived here. We wanted it to be green, change with the seasons, feature a range of colours, shapes and textures – essentially to look nice when we got home. As horticulturalists we spend a lot of time researching plants, so we know that what we have selected for your neighbourhood is also firmly in line with the brief – plants that are hardy, suitable for the conditions of the sites and require little to no maintenance. To create cohesion across the three sites we have used a core palette of evergreen flowering shrubs and perennials with variations in colour, size and texture. We have supplemented this 'core palette' with additional hardy shrubs to respond to the brief in relation to screening, windbreaks and protection. We have chosen many of the plants for the variety of attributes they have such as colour, scent and leaves or petals that are edible. We have incorporated wildlife friendly planting to include flowers for pollinators, berries, seed heads, hips with long seasons of interest. Shrubs have been positioned in several ways. To accent the 1950's architecture of the estate's buildings, to break up the landscape and provide screening. To employ visual interest and journeys through the landscape for residents, and to provide interest at entrances and pathways. Additionally, they complement the newly planted trees. Arriving home or walking the newly planted estate, residents and their visitors will be treated to colour, scent, changing seasonal interest and new vistas to enjoy. They can also avail themselves of cuttings from the variety of scented Mediterranean herbs placed around the site.

# Site 1

- Existing *Ilex crenata*
- Osmanthus burkwoodii*
- Choisya 'White Dazzler'* (Mexican orange blossom)
- Euonymus fortunei 'Emerald Gaiety'*
- New Holm Oads (*Ilex crenata*) underplanted with *Rosa rugosa 'Alba'*
- Mixed Hebe's
- Ilex aquifolium 'Argentea Marginata'*
- Osmanthus burkwoodii* x 3



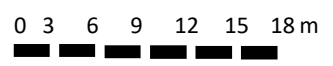
- Existing Whitebeam
- Black pines underplanted with *Rosa rugosa 'Alba'*
- Choisya 'White Dazzler'* (Mexican orange blossom)
- Stone pines underplanted with *Rosa rugosa 'Rubra'*
- Additional wildflower plug plants and wild daffodils

- Crataegus laevigata 'Paul's Scarlett'*
- Syringa vulgaris 'Joly Sensation'*
- Osmanthus burkwoodii*
- Euonymus fortunei 'Emerald Gaiety'*
- Ilex aquifolium 'Argentea variegata'*

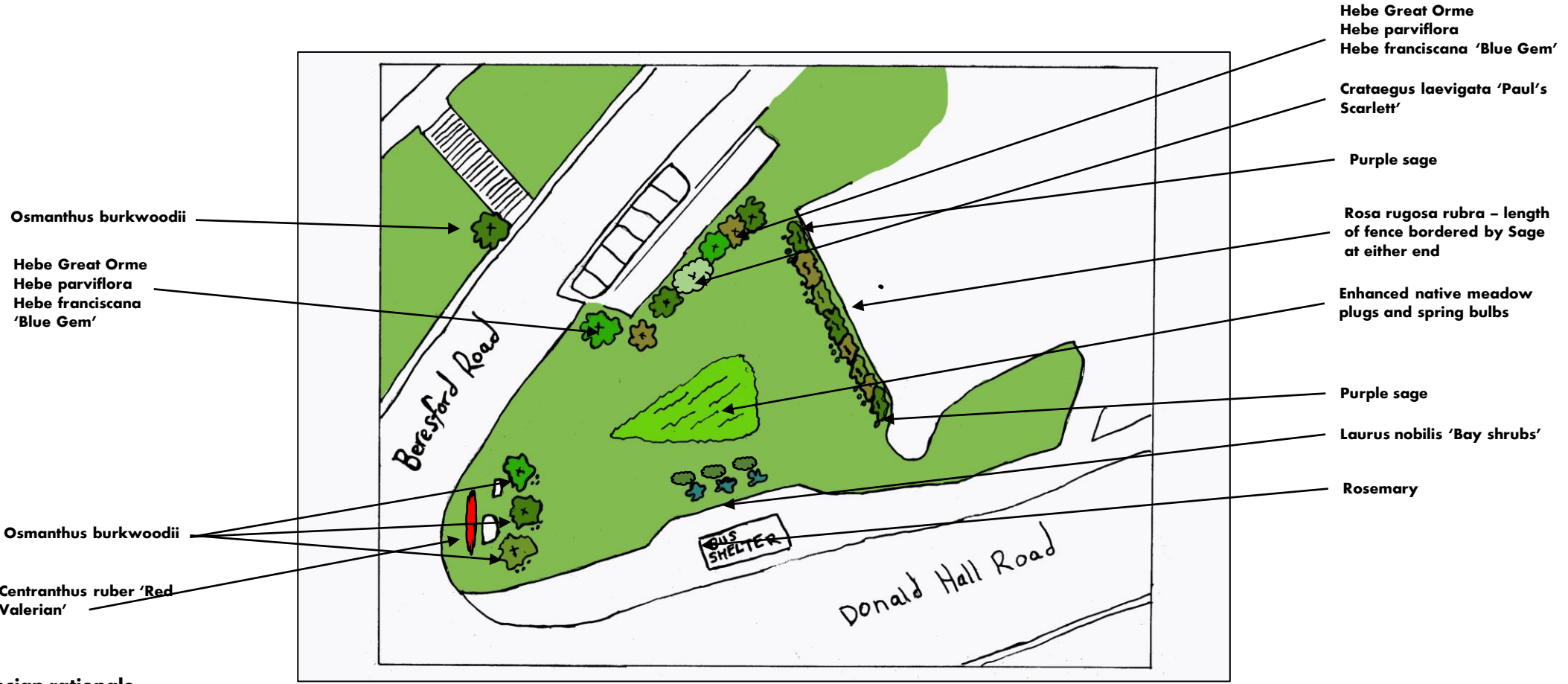
## Design rationale

To echo planting combinations and create cohesion across the three sites we would look to enhance the meadow area with wildflower plug plants and bulbs tying in with Site 2. The new Stone and Black pines will have defensive underplanted *Rosa rugosa Alba* and *Rubra* shrubs. Screening clusters of shrubs placed to obscure the garages and bins opposite Turton Close. Paths and entrances to Jasmine, Clematis and Magnolia houses accented with evergreen flowering shrubs. A palette of evergreen flowering shrubs features strategically across the site employing repetition to aid in creating a sense of cohesion across the site. Breaking up the landscape visually will encourage residents and visitors to explore the additional meadow planting.

Scale: 1:500 m



# Site 2



## Design rationale

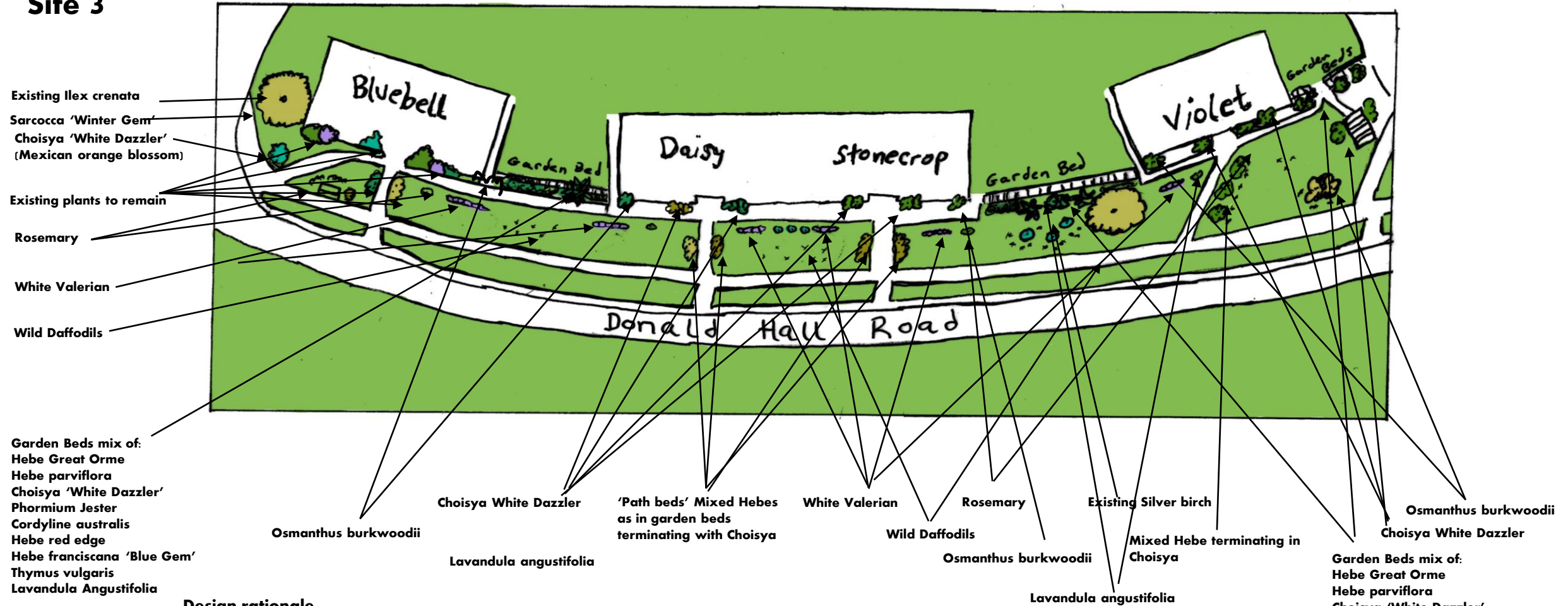
The bins along Beresford Road have been screened using the select palette of flowering shrubs in various colours and textures complemented by a central Hawthorn 'Paul's Scarlett' for brilliant spring colour and providing a safe home for a variety of wildlife. Along the fence bordering the shop we would introduce a hedge of red beach rose bordered at each end by purple sage for scent and colour. We would underplant the roses with chives, as they help to defend the roses against pests. The rose hips, like those of other rose species, are edible and can be used to make jams, syrups, tea, or eaten raw. The corner by the salt bin will be planted with evergreen winter flowering scented Osmanthus for seasonal interest. This shrub is mirrored at the base of the steps on the opposite side of Beresford road to create cohesion as we move along into site 3. The central area of the green which is normally left un-mowed, will be enhanced with additional wildflower plug plants and spring bulbs. Next to the wall and screened by the bus shelter, will be a row of bay shrubs underplanted with rosemary. This site of all the three strongly features the use of herbs. If popping along to the shop, one can easily grab a sprig of sage, rosemary, chives, bay leaves or rose hips. If desired, shrub areas could be underplanted with additional herbs such as thyme (which appears in site 3) and marjoram.

Scale: 1:500 m

0 2 4 6 m



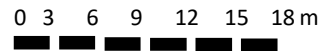
# Site 3



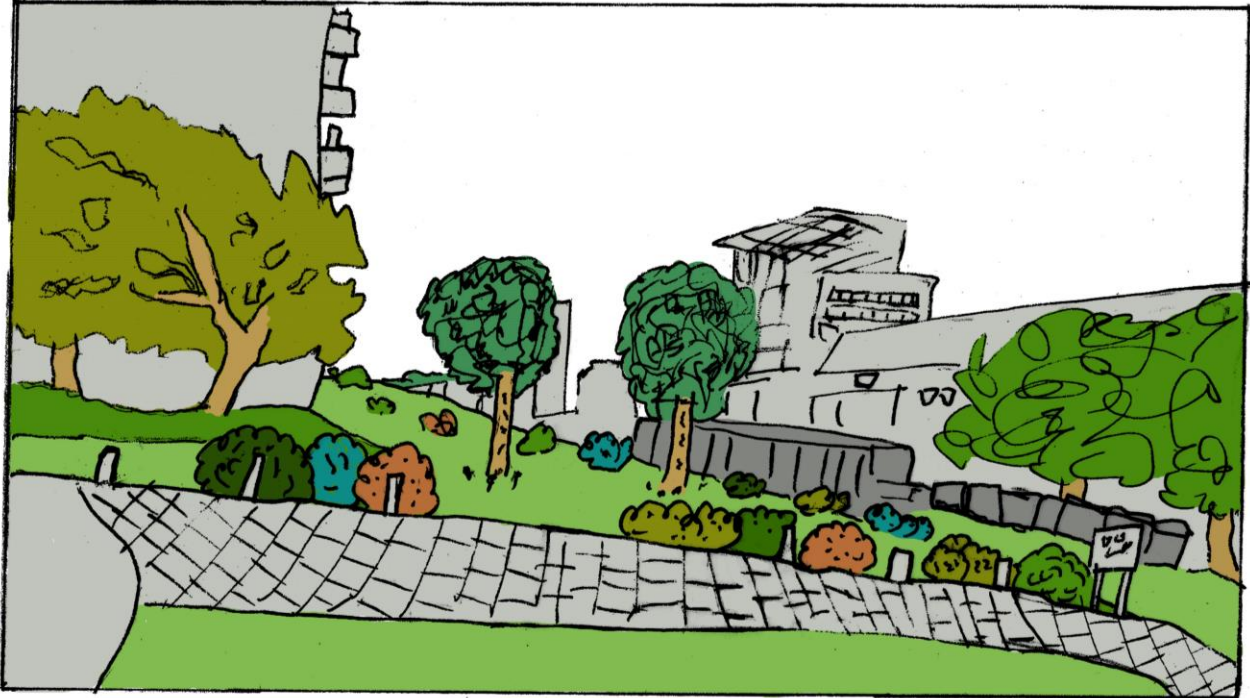
## Design rationale

Bluebell, Daisy and Violet House will have additional accent shrubs placed against the building, by entrances and along pathways. Evergreen flowering species that will provide visual interest and scent at varying times of the year. There is a generous use of Choisya 'White Dazzler' (Mexican orange blossom) which flowers twice a year. The decorative brick walls will be planted up with a mix of evergreen flowering shrubs in a varying palette of shades and colours, including pinks, purples and white. Additional cabbage palms, already present on various parts of the estate and popular throughout Brighton, will add height and interest. Shrubs will come in a variety of textures and be underplanted by herbs such as lavender and thyme. Wild daffodils, already present in some of the beds, will be naturalised into the grass verges around existing and new trees, and under 'path beds' lines of evergreen shrubs. To the left of Bluebell under the existing Holm oak, Sarcococca 'Winter Gem' will provide a further accent to the West side of the building as well as winter scent as you descend the path towards Whitehawk Hill Road.

Scale: 1:500 m



**Design Visualisations**



# Visual Plant List 1





## Visual Plant List 2







## Meet the Team

John McPherson, Elizabeth McCullough and Celia Davies studied together as mature students at Plumpton College.

We are all trained garden designers and horticulturalists with RHS level 2 and 3 qualifications. Celia has recently completed a Masters in Garden History. Elizabeth specialises in plant research and has assisted local garden designers with their plant selections. Liz and Celia supported John in the design and build of his design for the September 2021 RHS Chelsea Flower Show in the inaugural container garden category. 'Pop Street Garden' inspired by Pop and Graffiti art, achieved international press attention.

## Contact

**John McPherson**

e. [happygardensdesign@gmail.com](mailto:happygardensdesign@gmail.com)

[jwcmcperson@yahoo.co.uk](mailto:jwcmcperson@yahoo.co.uk)

m. **07961 441065**