



The countryside charity
Sussex

Protecting, Celebrating and Regenerating Sussex

Dan Osborn

Vice-Chair CPRE Sussex

16th July 2025

The Sussex Challenge

2 green

8 -10 red

- **Predominantly rural**, with a patchwork of towns and villages, and significant development.
- **Contains incredibly beautiful landscapes**, South Downs National Park, the High Weald and Chichester Harbour
- Yet **much of Sussex is not in good shape**.
- **Under extreme pressure** housing, roads and airports
- Experiences **water shortages** with increasing frequency, and its **rivers and seas are polluted**.
- **Suffering from the effects of a climate breakdown**, only expected to get worse:
- **Highly nature-depleted**, with 'industrial' farming practices playing a significant role in this decline.
- Especially in our towns and cities, **people experience air, light and noise pollution and a lack of access to nature**.
- **Local people are increasingly priced out** of the countryside, and Sussex as a whole.

Meeting the Challenge

- **Protect:** resist excessive and poor development in Sussex to protect landscapes, natural systems and green spaces, while supporting genuinely affordable housing and tackling climate change
- **Celebrate:** inspire people with a love of the Sussex countryside, and enable everyone to access its transcendent beauty, and the health and wellbeing it brings
- **Regenerate:** create a greener future for Sussex through practical action and policy change, to restore clean water and air and flourishing nature, and build a thriving, equitable, economy that links rural and urban Sussex
- **Build our capacity:** engage more members, supporters, volunteers, staff and funds, empowering more people to deliver on our mission



Negative Policy Context

Spades in the Ground – Growth at all costs with unachievable and needless targets

The Blockers – The NIMBYS and The Environment (that's you and here)

False Narratives – The Nonsense of the £100M Bat Tunnel (HS2 at its worst)

Vanity Projects – £400M+ for the raised flyover of the A27 @ Arundel (Cancelled)

Could Climate Change please go away? (No)

Magical Thinking – Sustainable Aviation (the planes that don't exist)

Action and Partnering

Protect

Local Plans
Development Planning
Gatwick Expansion
Mayoral Authority

Celebrate

“Brighton” Tree Festival
Countryside Day at Knepp
Rugby World Cup

Regenerate

Gatwick expansion
Rooftop solar capacity of Sussex and Hampshire
Mayoral Authority

What we all have to do

– best done as a group and with partners

Make local voices heard in Planning:

Respond to Consultations
Selectively Object to Applications for
Development

Influence:

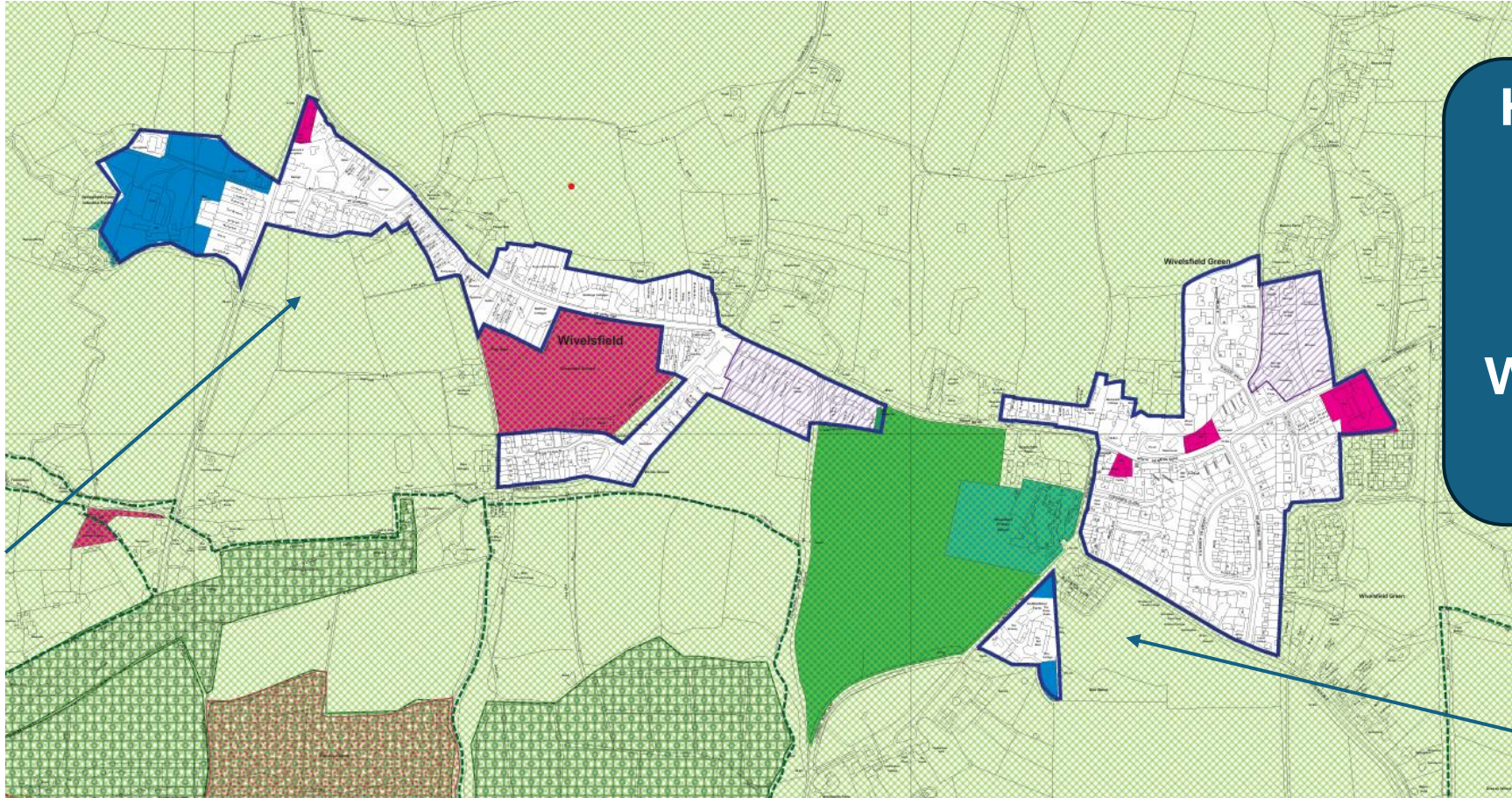
Councillors and MPs
Mayor's office
Government

Move onto the front foot:

Propose what local people need
Use evidence well
Push for change
Call out false and magical thinking

Wivelsfield and Wivelsfield Green: From Local Plan documents on the Lewes District Website

Another missing development. Visible on Google Earth and there for all to see



How clear is the narrative around Wivelsfield?

Bluebell Gardens?

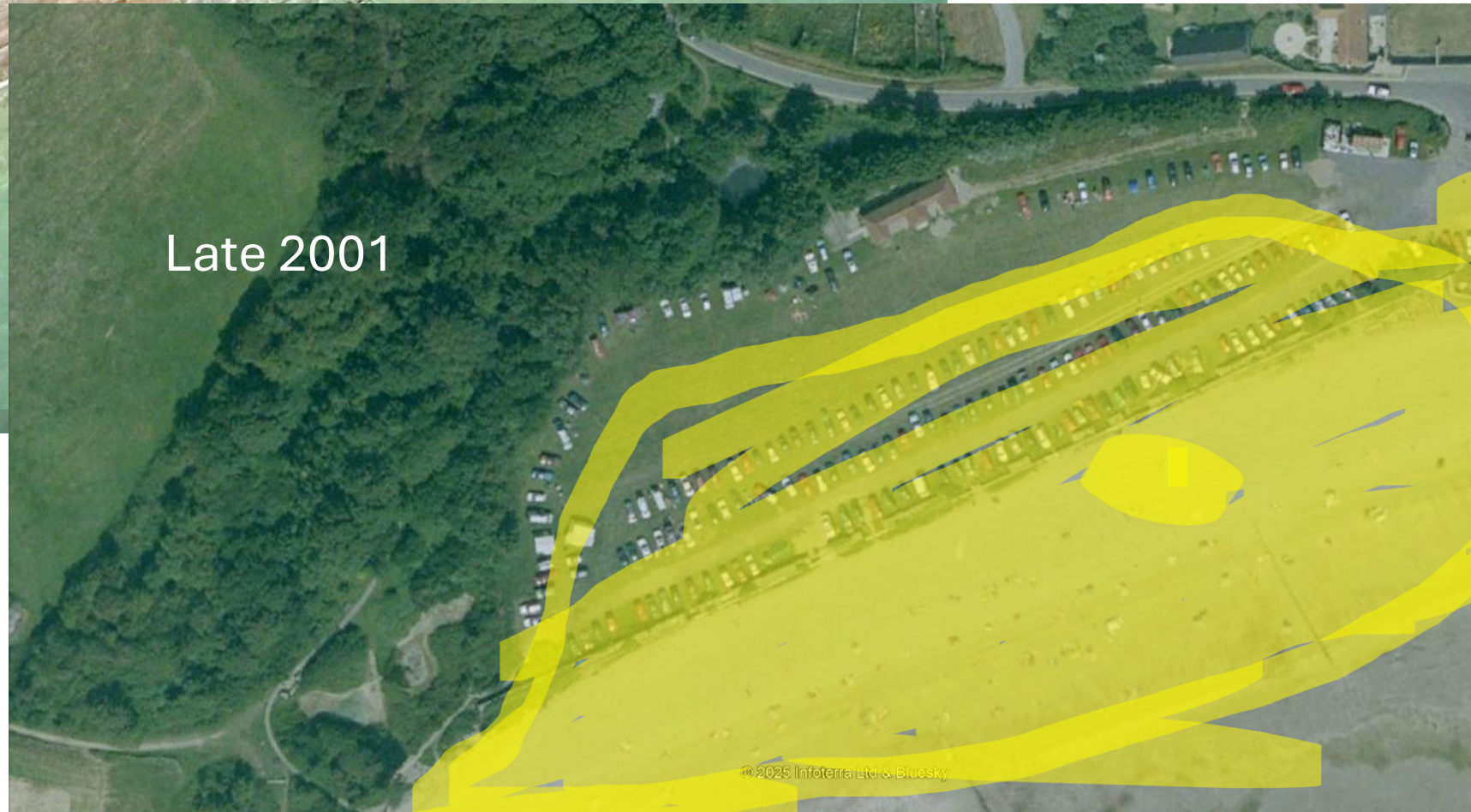
Wivelsfield and Wivelsfield Green - from Google Earth





Early 2025

Climping



Late 2001

No A lot of intervention

What Do We Need for the Future?

- From “Branch Out” Part of the 2025 Tree Festival:
 - **Education** for Communities, Families and Individuals
 - **Actions that involve whole families across generations** and address the aftercare of the environment to sustain it and ensure nature and people thrive.
- CPRE Sussex:
 - **Members and Supporters** – 5X more of them to represent the many different communities in Sussex
 - **Trained Volunteers**
 - **Join** – because CPRE Sussex is the only body that tries to maintain an overview of the Sussex heritage we value.

Thank you Any questions?

<https://www.cpresussex.org.uk/get-involved/become-a-member/>

info@cpresussex.org.uk

Or just Google CPRE Sussex and go from there